

CERTIFICATE OF LOCATION OF GOVERNMENT CORNER

County of Anoka

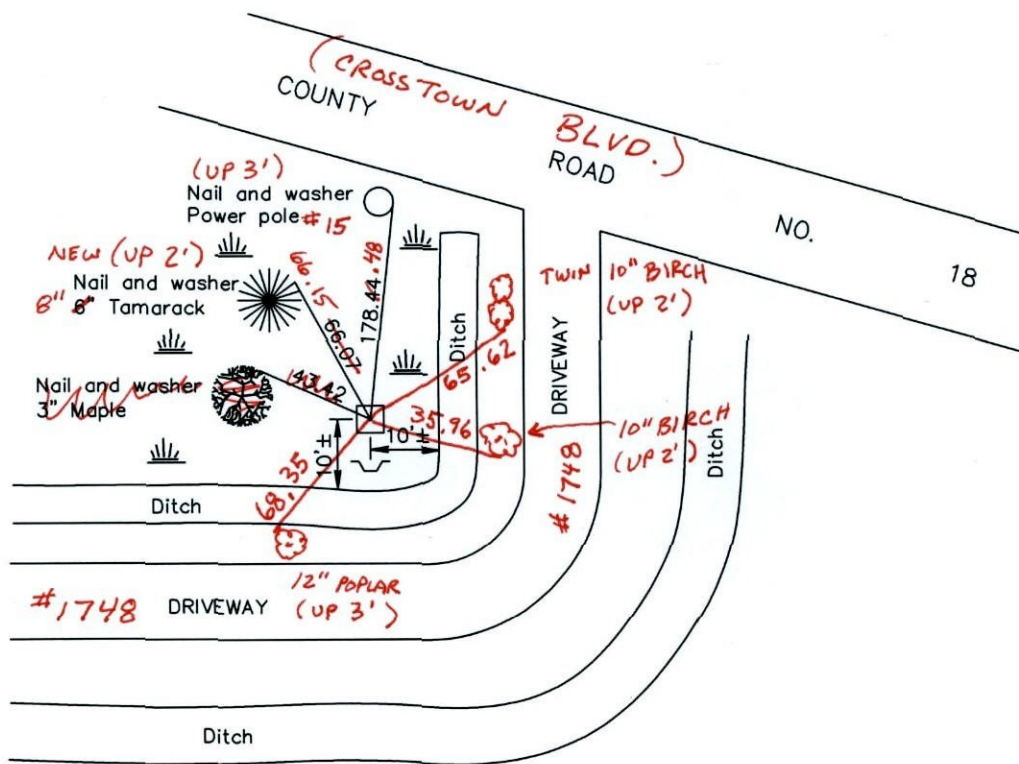
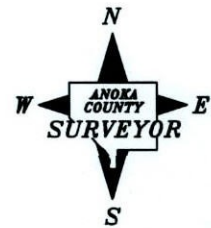
State of Minnesota

Southeast Corner of Sec. 5 Township 32 Range 23

I hereby certify that on the 13th day of July, 1964, I found the described corner which was evidenced by a concrete monument ✓

and I further certify that to perpetuate the location of said corner, I did, at the exact location thereof, place a permanent marker consisting of same with sign and post on the south side ✓

which reference or witness monuments are located in the manner following:



BK-55
T/T

Revised date

7/02/87
8/21/96
3/04/02
3-16-11

N.A.D. 1983 Coordinates
(1996 adjustment)

County Project Coordinates	State Plane Coordinates
Northing <u>190865.0521</u>	Y _____
Easting <u>510838.4339</u>	X _____

Date 3/04/02

CERTIFICATE OF LOCATION OF GOVERNMENT CORNER

County of Anoka

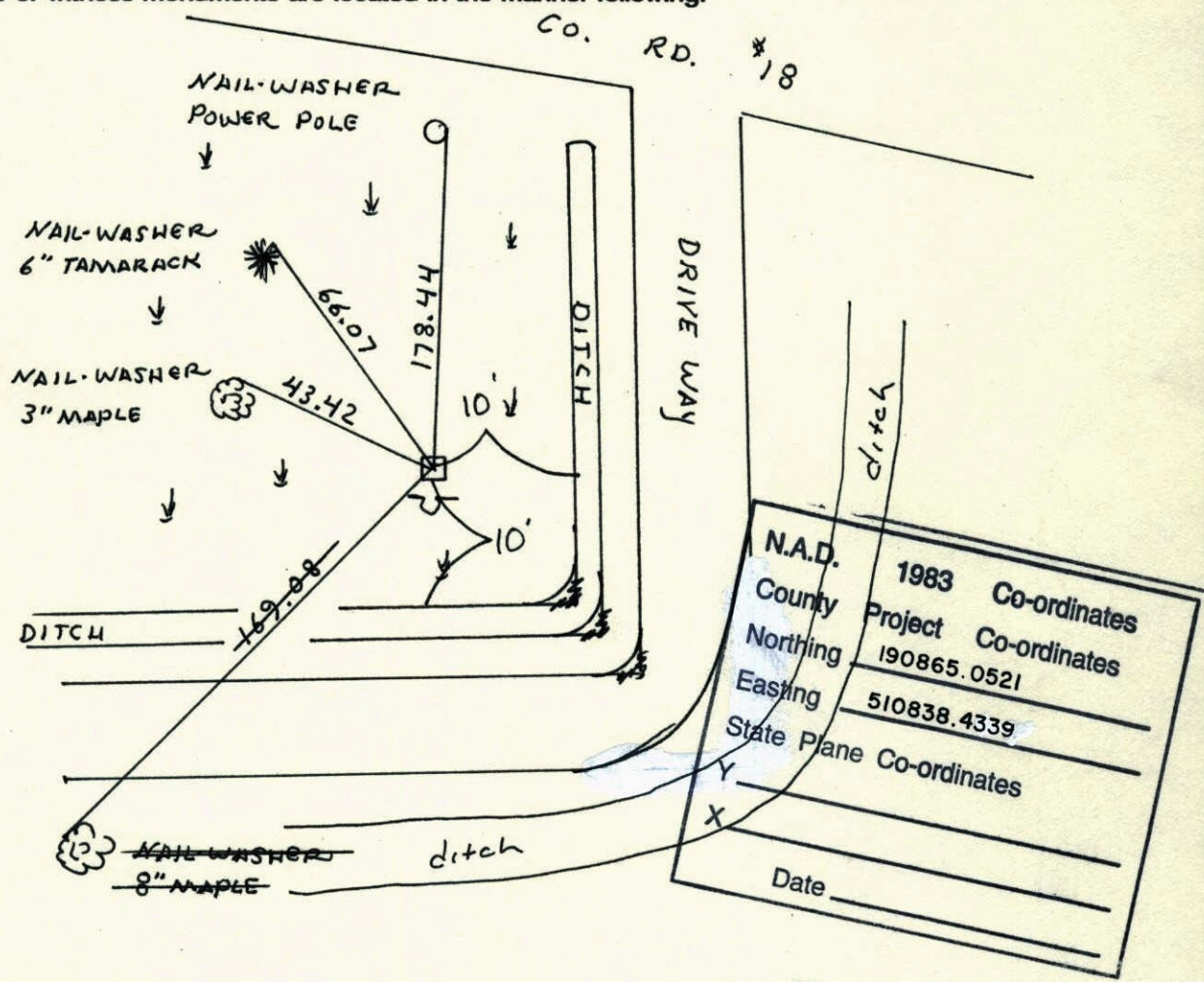
State of Minnesota

SOUTHEAST Corner of Sec. 5 Township 32 Range 23

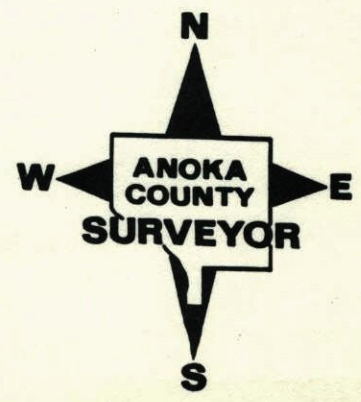
I hereby certify that on the 13TH day of JULY, 1964, I found the described corner which was evidenced by CONCRETE MONUMENT

and I further certify that to perpetuate the location of said corner, I did, at the exact location thereof, place a permanent marker consisting of SAME

which reference or witness monuments are located in the manner following:

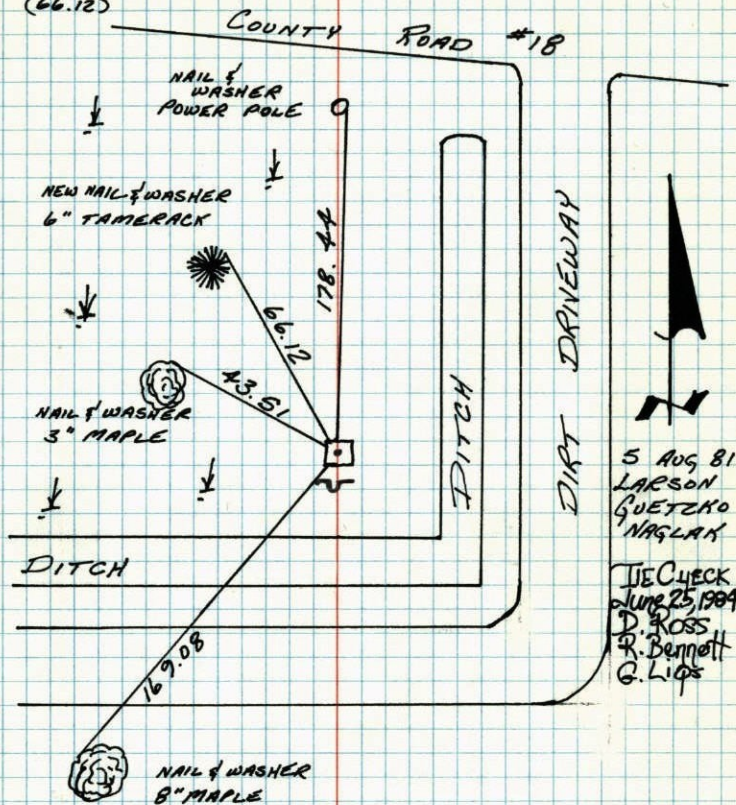


Revised date	Revised date	Revised date
7-2-87		
8-21-96		
3-4-02		



S.E. CORNER SECTION 5-T32-R23

RETIED CONCRETE MONUMENT. OLD TIE TO TAMARACK WAS GOOD. SIGN AND POST ON SOUTH SIDE.
(66.12)



5 AUG 81
LARSON
GUETZKO
NAGLAK

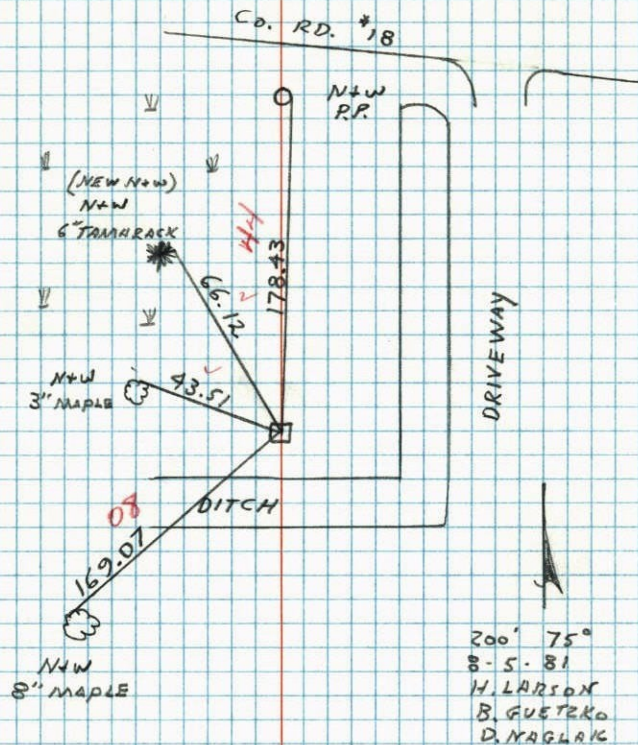
IJC CHECK
JUNE 25, 1999
D. ROSS
R. BENNETT
G. LIQS

TEMPERATURE CORRECTED
AND HORIZONTALLY
TAPED MEASUREMENTS

ROLAND W. ANDERSON
COUNTY SURVEYOR
ANOKA COUNTY, MINNESOTA

SE CORNER SECTION 5 T32 R23

RETIED CONCRETE MONUMENT. ^{OLD}TIE TO TAMARACK WAS GOOD. SIGN+POST ON SOUTH SIDE.
(66.21)



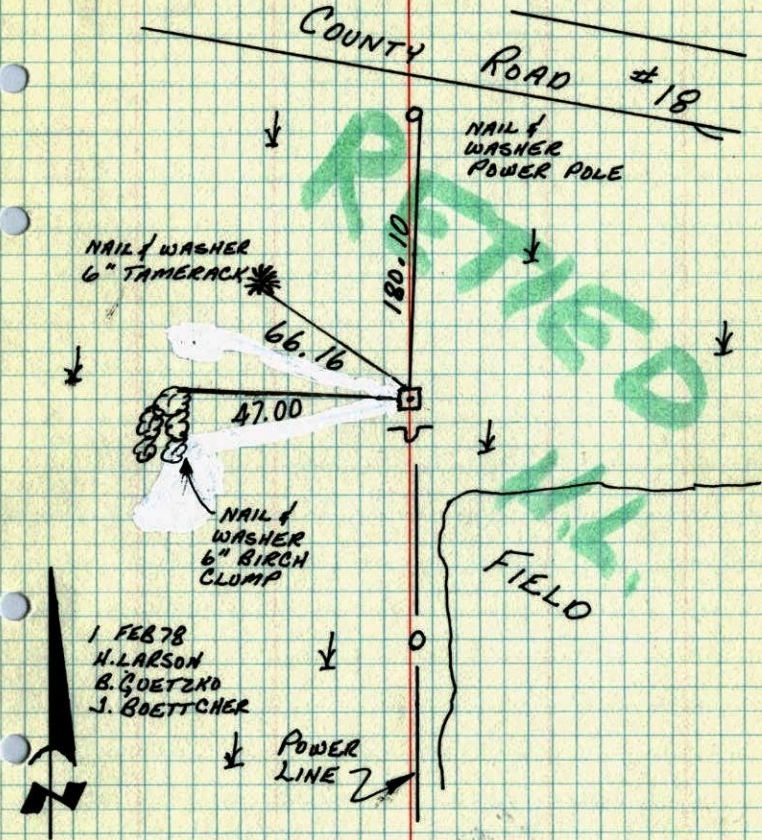
200° 75'
08-5-81
H. LARSON
B. GUETZKO
D. NAGLAK

S.E. COR. SEC. 5 - T32 - R23

RETIED CONCRETE MONUMENT FOUND IN 1966.

CONCRETE FLUSH AND ON LINE WITH POWER LINE.

STEEL POST ON SOUTH SIDE.



1 FEB 78
H. LARSON
B. BOETZKO
J. BOETTCHER

TEMPERATURE CORRECTED
AND HORIZONTALLY
TAPED MEASUREMENTS

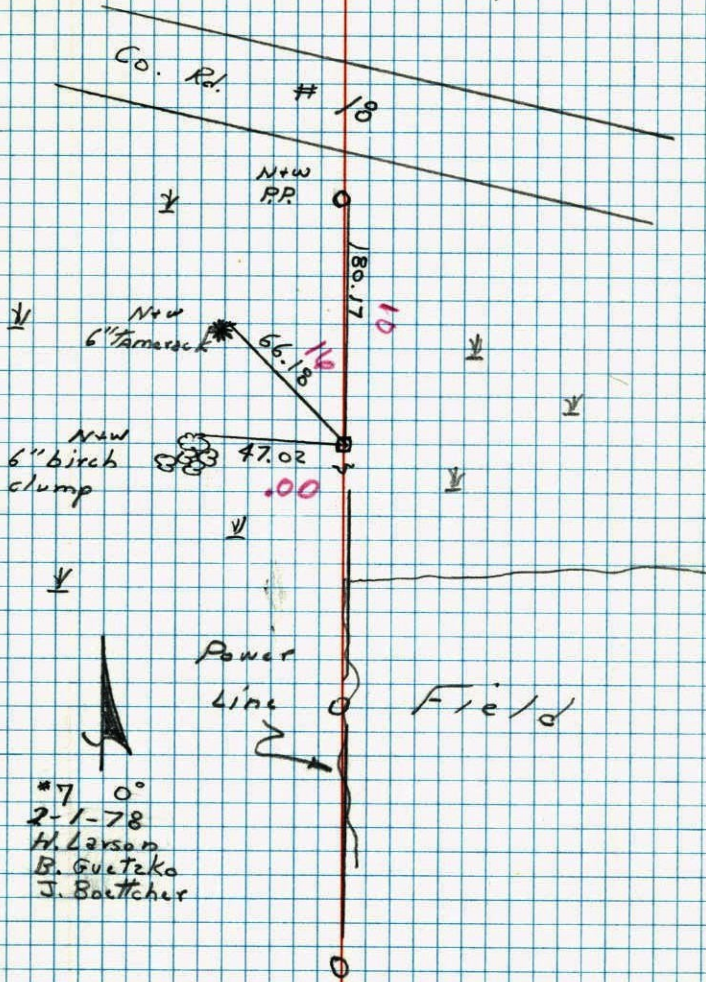
ROLAND W. ANDERSON
COUNTY SURVEYOR
ANOKA COUNTY, MINNESOTA

SE Cor. Section 5 T32 R23

Retied concrete monument Found

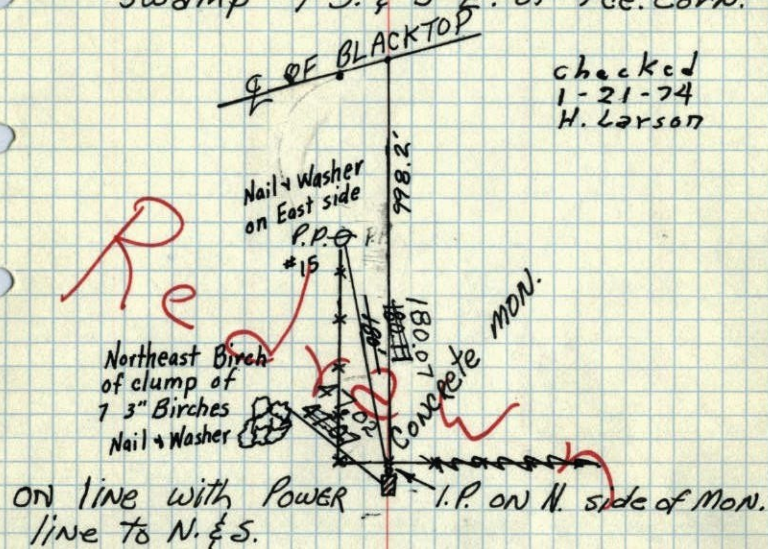
in 1966. concrete flush and on

line with Powerline. Steel post on S. side



*7 0°
2-1-78
H. Larson
B. Guetzko
J. Baettcher

S.E. Corn. Sec 5, T.32, R. 23,
Found Conc. Mon. Flush in
Swamp 1'S. & 3' E. of Fee. Corn.



Tie Check
July 19, 1966
B. Rogers
D. Powell
J. Berry

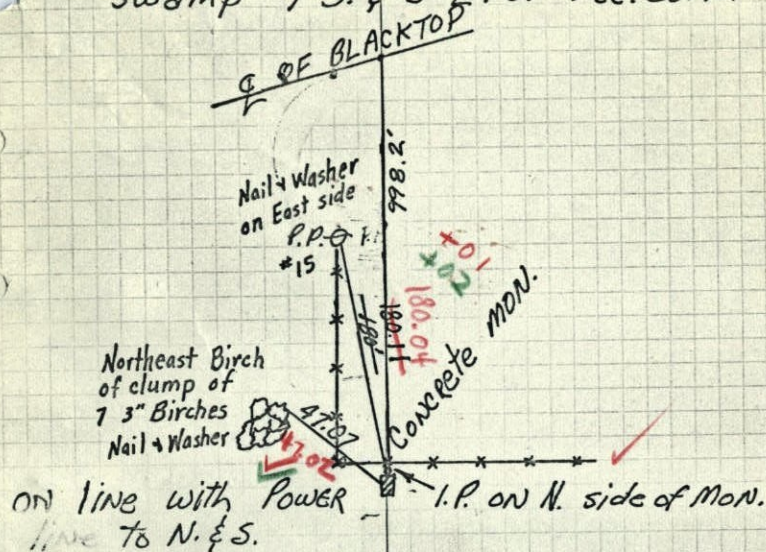
Wet,
June 15, 1971
R. Brien

Tied
2-1-78
H. Larson
B. Guzik Retie 7/13/64
J. Boettcher
M. D. Anderson
R. Carlson

July 2, 1959

Bill Rogers Assisting
ROLAND W. ANDERSON
COUNTY SURVEYOR
ANOKA COUNTY, MINNESOTA

S.E. Corn. Sec 5, T.32, R. 23,
Found Conc. Mon. Flush in
Swamp 1'S. & 3' E. of Fee. Corn.



Ties checked
7/19/66

B. Rogers
D. Powell
J. Berry

Temp. $\#5$
 86°

Retie 7/13/64

M. D. Anderson
R. Carlson

July 2, 1959

Bill Rogers Assisting
ROLAND W. ANDERSON
COUNTY SURVEYOR
ANOKA COUNTY, MINNESOTA

S10
SE Corn sec. A, T32, R23
5

Sandstone Man. Flush

Drill Hole on Top

